

Supreme Quality Dishwasher

DolPhin

DISHWASHER USER MANUAL

“Toward the best customer service”

Dolphin promises world's best customer service.

DolPhin
www.dolphin.co.kr



MODEL
DW-1200

Contents

Dishwasher Features 02_03 | Notice on Operation 04_05
Prevent electrical leakage and shock 06 | Precautions 07 | Part Name 08
Display on operating 09 | Check points before operating 10
Tip for dishwashing and M/C cleaning 11 | Dimension & Specification 12
Trouble shooting 13 | A/S information 14 | Memo 15

* The specification is subject to change without notice for improvement and the color could be different from real product.



DOLPHIN CO.,LTD
32, 229 Rd., Oksan-Str., Bucheon-Si, Gyeonggi-Do, 14519 Korea
TEL. 82-32-612-3456 FAX. 82-32-682-3814

DolPhin

UNDER COUNTER DISHWASHER

Automatic Dishwasher >>

Auto Dishwasher
DolPhin

“BEST SOLUTION FOR YOUR KITCHEN”

Dishwasher Features



JET-BEAM WASH ARM

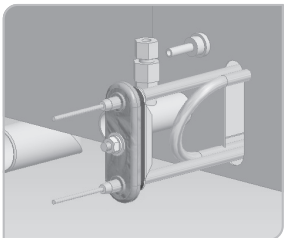
3D jet-beam spray nozzle is designed for the optimal spray angle and actualizes strong washing efficiency like waterfall shower.

Patented 30-0380197



BUILT-IN DISPENSER

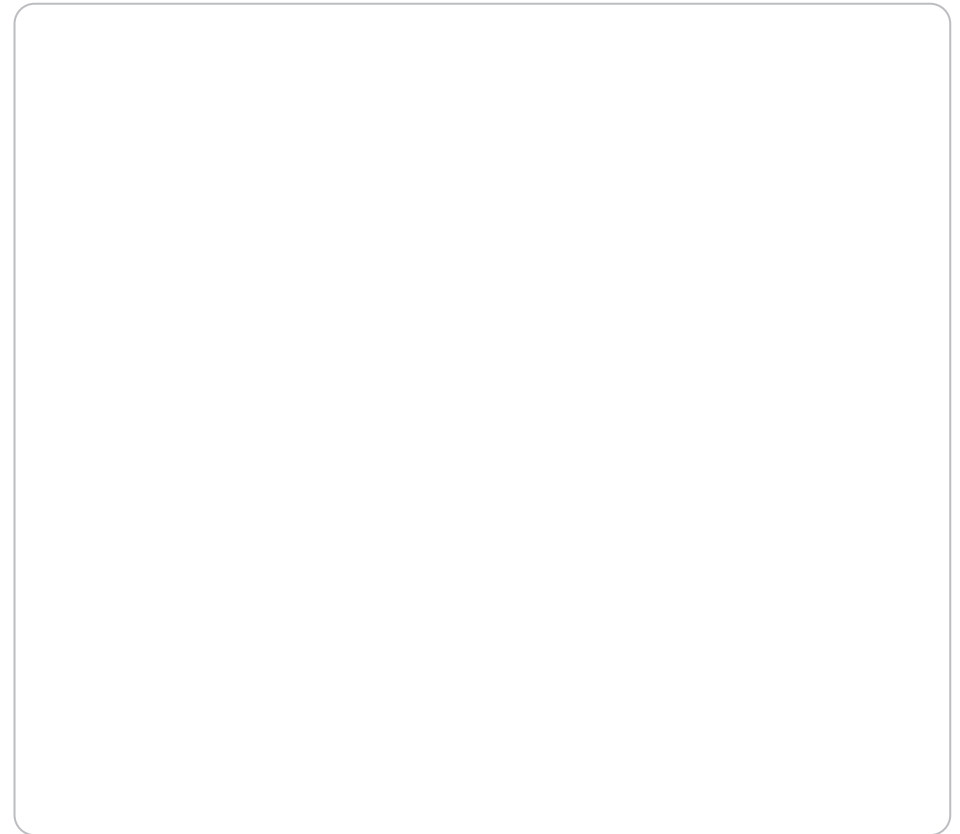
Dolphin provides built-in dispenser of detergent and rinse aid for all models which is automatically controlled at each stage by MICOM.



BUILT-IN BOOSTER

Built-in booster tank provide the effective heat saving and practical space usage. And booster tank reduces operating costs by reducing heat loss.

Memo



DolPhin

UNDER COUNTER DISHWASHER

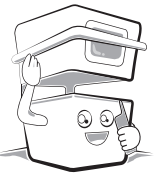
Automatic Dishwasher >>

Auto Dishwasher
DolPhin

A/S information

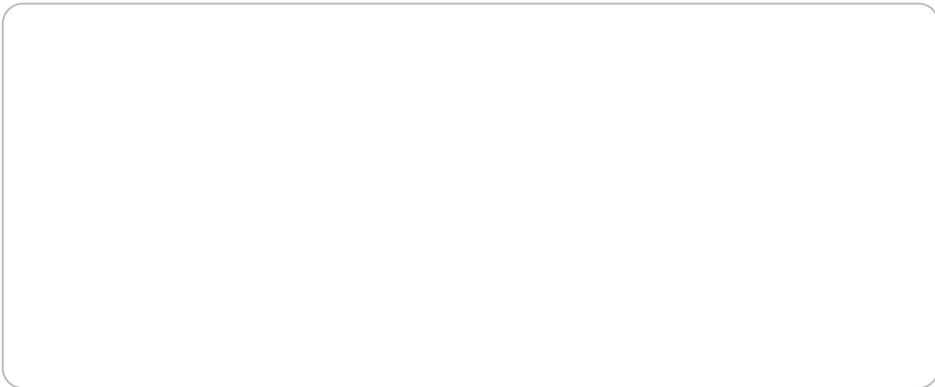


- Before A/S request, please check trouble shooting and follow out instruction.



- Please ask Dolphin agent for purchasing of dishwasher, accessory and chemicals

Contact information



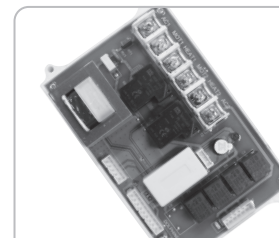
REMOTE CONTROLLER

Remote controller is not interrupted by installed position even in corner installation. User can read operating stage and upcoming process through FND easily. You can set each cycle by sec. and check total running number. The test mode programmed can diagnosis working status of each part on the controller.



Drainage on top cover

When the rack with the bowl is placed on the dishwasher, the water flowing in the upper part is collected to the inside of the dishwasher so that the water does not flood to other places.



PCB

The modularized PCB designed by Dolphin reduces malfunction ratio and provides the optimal washing sequence. All procedure is controlled by its MICOM.

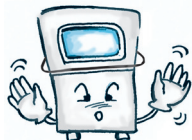
Safety lock, self-diagnosis function is programmed and the cycle is changeable according to using environment.

UNDER COUNTER DISHWASHER

Automatic Dishwasher >>

Notice on Operation

- Never wash the vessels with poisons that can be dangerous if contaminated to the dishes



- Never put an inflammable liquid into the machine that can be the cause of explosive accident



- Never open the door while operating that might be dangerous to get burned by hot water



- Keep the door closed while operating, otherwise dangerous to get burned by hot water



- Call service center if any problem. Only an authorized technician is possible for maintenance



- Ground the wire. Otherwise, electric shock and leakage may occur



- Do not place anything top of dishwasher that may cause machine trouble



- Do not pour the water to the machine that can cause of electrical leakage while cleaning M/C



Trouble shooting

Before service call, check the symptoms and related causes

Auto Dishwasher
Dolphin

Symtom	Possible cause	Solution
<ul style="list-style-type: none"> Higher forming than usual 	<ul style="list-style-type: none"> Do not use dishwasher detergent? Low temperature of wash water? 	<ul style="list-style-type: none"> Use dishwasher detergent Check wash water temperature
<ul style="list-style-type: none"> No ignition of gas booster 	<ul style="list-style-type: none"> Closed gas valve? Closed water valve? Battery out for ignition? Dripped water by low pressure? 	<ul style="list-style-type: none"> Open valve Open valve Exchange batteries Close another valve
<ul style="list-style-type: none"> Gas booster kept on 	<ul style="list-style-type: none"> Take out the drain pipe? Close booster tank(ball) valve? 	<ul style="list-style-type: none"> Put it on wash tank Close booster tank(ball) valve.
<ul style="list-style-type: none"> Wash defects 	<ul style="list-style-type: none"> Debris on the nozzles of wash arm? Runout of detergent? 	<ul style="list-style-type: none"> Remove debris Refill up a detergent
<ul style="list-style-type: none"> Dry defects 	<ul style="list-style-type: none"> No rinse aid? Low temperature of rinse water? Debris on nozzle of rinse arm? 	<ul style="list-style-type: none"> Refill up a rinse aid Use the M/C at the proper temperature Remove debris
<ul style="list-style-type: none"> Weak wash blade or drip 	<ul style="list-style-type: none"> Food or debris on the filter of wash pump 	<ul style="list-style-type: none"> Remove debris

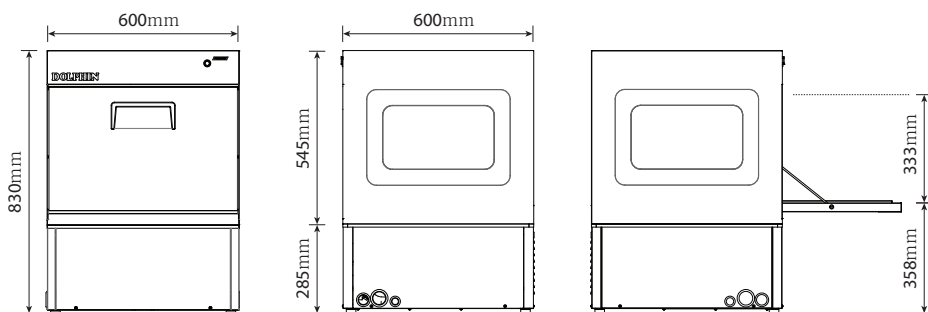
UNDER COUNTER DISHWASHER

Automatic Dishwasher >>

Auto Dishwasher
DolPhin

Dimension & Specification

Dimension



Specification

Item	Spec	Item	Spec
● Model	DW-1200	● Type	UNDER COUNTER
● Wash Tank	18ℓ	● Dimension	600(W)×600(D)×830(H)mm
● Wash Temp	60 ~ 65℃	● Wash Time	40 Sec ~ 120 Sec (8 Steps)
● Rinse Tank	8ℓ	● Rinse Time	6 Sec ~ 13 Sec (8 Steps)
● Rinse Temp	80 ~ 85℃	● Detergent	Low foaming Dishwash Detergent
● Max Consumption power	4.0kW	● Wash Capacity (hour)	36~40 Racks per hour
● Used Voltage	1PH 220V 50/60Hz		

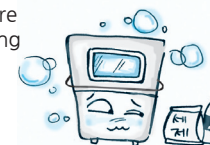
- Install the machine in a well-ventilated & no flammable agent



- If a gas booster ignition error occurs, contact a service center immediately. Make sure to close gas valve and check gas leakage



- Use only low forming detergent for dishwasher. High foaming soaps can interfere with good washing



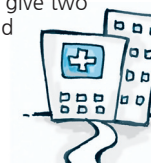
- Keep chemical agents away from children



- Do not get the detergent in skin, clothes and eyes when exchanging chemicals. Detergents are highly corrosive to skin, eyes and clothing.



- Do not inducing vomiting if drink detergent. Instead, give two glasses of water and then, immediately go to see a doctor



- Wear physically & chemically impervious gloves and apron while cleaning and moving machine. Otherwise, get an injury during cleaning and moving



- Avoid the materials; reactive with acids and alkalis etc



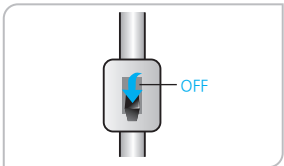
UNDER COUNTER DISHWASHER

Automatic Dishwasher >>

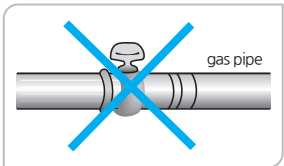
Auto Dishwasher
DolPhin

Prevent electrical leakage and shock

If the machine is not grounded, please call to service center



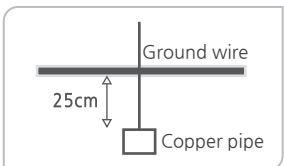
Equip earth leakage breaker and make sure to ground the wire to avoid an electrical accident



Never ground to a gas pipe
- Never connect explosive materials



Connect the wire to metal pipe [no PVC pipe]



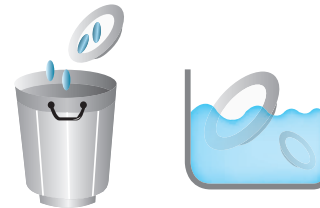
Connect the wire to Copper pipe
- Copper pipe should be installed with 25cm deep

Tip for dishwashing and M/C cleaning

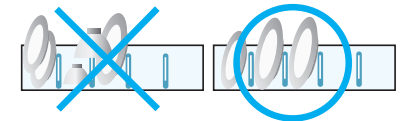
Proper use and care of the washing M/C can extend the life of washing M/C

Tip for washing

- Scrap the dishes to remove large particles of food and debris [prewash]



- Arrange the dishes in the rack. Don't stack dishes one on top of another as water must have free access to all sides of every dish



- After filling a rack, open the door, slide a rack into the dishwasher and close the door

Tip for cleaning dishwasher

1. Cautions for dishwasher

- The machine must be thoroughly cleaned at the end of each working shift or at least daily
- Never use steel wool to clean the dishwasher

2. Cleaning

- Turn off the power button
- Drain wash water by taking out drain pipe and strainer
- Clean off the strainer
- Clean and flush the dishwasher inside and remove a remained soil with soft cloth or brush
- Replace all removed parts and leave the machine door open to allow inside to air out and dry

※ Safety gloves must be worn when cleaning the inside/outside of the machine, as if may cause injury

UNDER COUNTER DISHWASHER

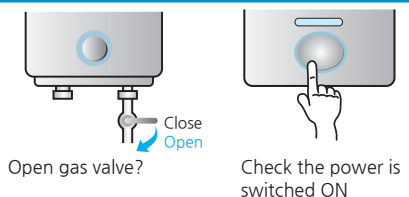
Automatic Dishwasher >>

Auto Dishwasher
DolPhin

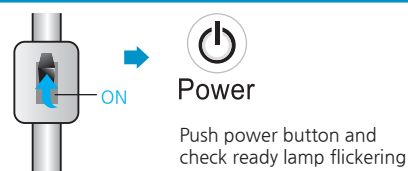
Check points before operating

1. Place drain pipe and strainer on right place
2. Check booster tank drain valve closed
3. Check the electricity, water and gas

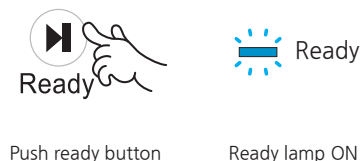
1. In case of using gas booster, open valve of gas booster



2. Turn on the main switch



3. Controller



4. Await for watering after closing the door

After watering and supplying chemicals, M/C get to standby



5. Wash

- A. Put the dishes into the rack
- B. Put the lack into the machine
- C. Close the door. The machine will be automatically operated by door actuation system

6. Rinse the dishes and Rinse aid feeding

After finish up the wash course, automatically operate as programmed

7. Finish

Buzz for the finish and finish & stand by lamp on

Precautions

When using the washing machine, be sure to read the precautions for minimal malfunction and accident

Winter season and storage maintenance

- Drain water completely for freezing prevention.
- Drain water completely for long-term storage
When operate again, call service center
- During periods of non-use, turn off circuit breaker

Caution in underground water

- If hard water is supplied to the machine, it may cause part defects of heater or pump by lime scale.
Be sure to install water softener.
(The damage caused by hard water is not covered by warranty)

Important

- When gas leakage is detected, shut down the main gas and contact the local gas company or gas supplier for the service

For your safety

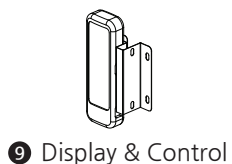
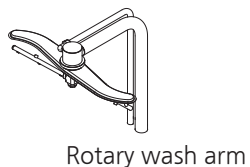
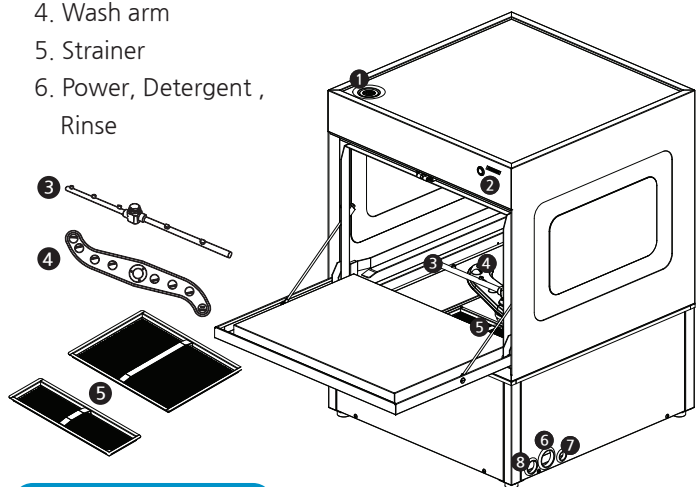
- Do not store gasoline and any other flammable vapors or liquids nearby the machine

UNDER COUNTER DISHWASHER

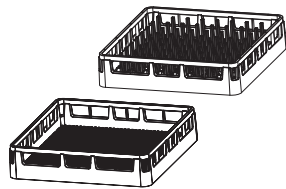
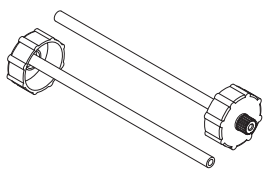
Automatic Dishwasher >>

Auto Dishwasher
DolPhin

- 1. Drainage on top cover
- 2. Start button
- 3. Rinse arm
- 4. Wash arm
- 5. Strainer
- 6. Power, Detergent, Rinse
- 7. Drain
- 8. Water supply
- 9. Display & Control



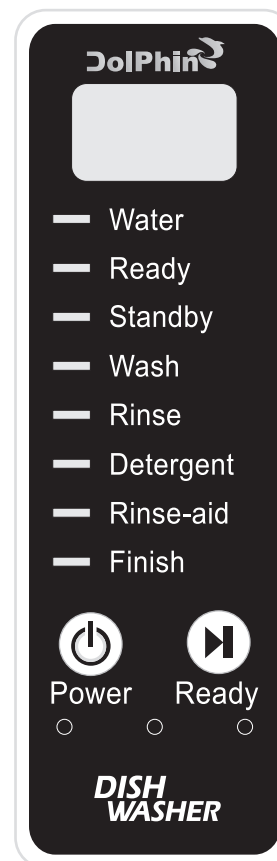
Basic Components



Display on operating

“Easy to use at both sides of Machine”

Available to hang on left or right hand of dishwasher



Usage of Dishwasher

- Water : watering to wash tank
- Ready : ready to operate [heating & detergent]
- Stand by : preparation for operation
- Wash : wash dishes
- Rinse : rinse dishes
- Detergent : feeding the detergent
- Rinse aid : feeding the rinse aid
- Finish

● Power ON/Off
Power

● ready to operate/lock the M/C
Ready