

DS-1G

Technical Manual



167-3, Dodang-Dong, Wonmi-Gu, Bucheon-Shi, Gyeonggi-Do, 420-805 Korea

TEL: 032) 612-3456

FAX: 032) 612-3820

<http://www.dolphin.co.kr>

e-mail: dolphin@dolphin.co.kr

DOLPHIN. CO., LTD

- INDEX -

	page
1. Specifications and Dimensions	3
2. Usage	4
3. Parts Name	5
4. Electrical parts	6
5. Trouble shootings	8
6. Maintenance.....	11
7. Electric wiring diagram	19
8. Dishwasher Installation	20

1. Specifications and Dimensions

MODEL	DS-2G	
	DS-2G	
DIMENSION	STANDARD TYPE	
	4,400(L) × 700(W) × 1500(H)mm	
TYPE	GAS TYPE	
<div>1. MATERIALS : STS-304 1.0T, 1.2T, 1.5T 2.0T</div> <div>2. ELECTRICAL SPECIFICATIONS: 380V, 3Ph, 4 wired</div> <div>3. ELECTRIC CONSUMPTION: 29.3kW</div> <div>4. WASH PUMP: 2.25kW(380V, 3Ph, 4wired, 1100 liter/min)</div> <div>5. WASH TANK CAPACITY: 120 Liters</div> <div>6. WASH TEMPERATURE: 60℃~70℃</div> <div>7. HEATING ELEMENT FOR WASH TANK: 8kW [4kW x 2EA_Immersion type]</div> <div>8. WASH TYPE: CLOSE POWERFUL SPRAY</div> <div>9. DRY TYPE: HOT WIND BY RING BLOWER [HEATER, 3kW & BLOWER, 2.25kW]</div> <div>10. BOOSTER: GAS BOOSTER BY LPG OR LNG</div> <div>11. WATER CONSUMPTION: WASH WATER 80 Liters x 1Tank / 120 Liters x 2Tank RINSE WATER – 13 L/MIN</div> <div>12. HEAT QUANTITY FOR WASH TANK: 13,760 Kcal/h</div> <div>13. HEAT QUANTITY FOR RINSE: LNG-63,700 Kcal/h, LPG-7 kg/h</div> <div>14. CONVEYOR SPEED: 0-10M/min (SPEED CONTROL MOTOR: 180W, SPEED CONTROL AVAILABLE)</div> <div>15. CONVEYOR PITCH AND CHAIN WIDTH: 355.6 mm/PITCH, CHAIN WIDTH: 426 mm</div> <div>16. NOZZLE: UP/DOWN SPRAY NOZZLE, EASY TO CLEAN SCREW TYPE</div> <div>17 SAFETY DEVICE: OVERLOAD RELAY, EMERGENCY SWITCH AT INLET AND OUTLET</div> <div>18. WASH CAPACITY: CATERING FOOD TRAY 1,100-1,300 EA/h [CONVEYOR SPEED AT 6.0 m/min]</div> <div>19. OTHER SPECIFICATIONS: WATERING CONN.-PRESSURE: 1.2Kg/cm² PIPE: 15A OVER DRAINING CONN.-PIPE: 50A OVER AT BOTTOM OF THE M/C VENTILATION –NO NEEDED HOOD [CONNECT Ø150 DUCT PIPE(PVC 125) TO M/C INLET]</div>		

2. Usage

1) Precheck for operation

- ⌚ Clean the inside of dishwasher.
- ⌚ Remove the food stuffs on the strainer
- ⌚ Remove the debris on the nozzles of wash and rinse
- ⌚ Clean the wash tank

2) Notice on operation

- ⌚ Never stack dishes one on top of another on the belt
- ⌚ Don't put the others except for dishes

3) Preparation for wash

- ⌚ Fasten the drain valve
- ⌚ Check no damage on the main electrical cable
- ⌚ Open all watering valves
- ⌚ Turn on the switch [Check red lamp ON and green lamp ON if finished watering]

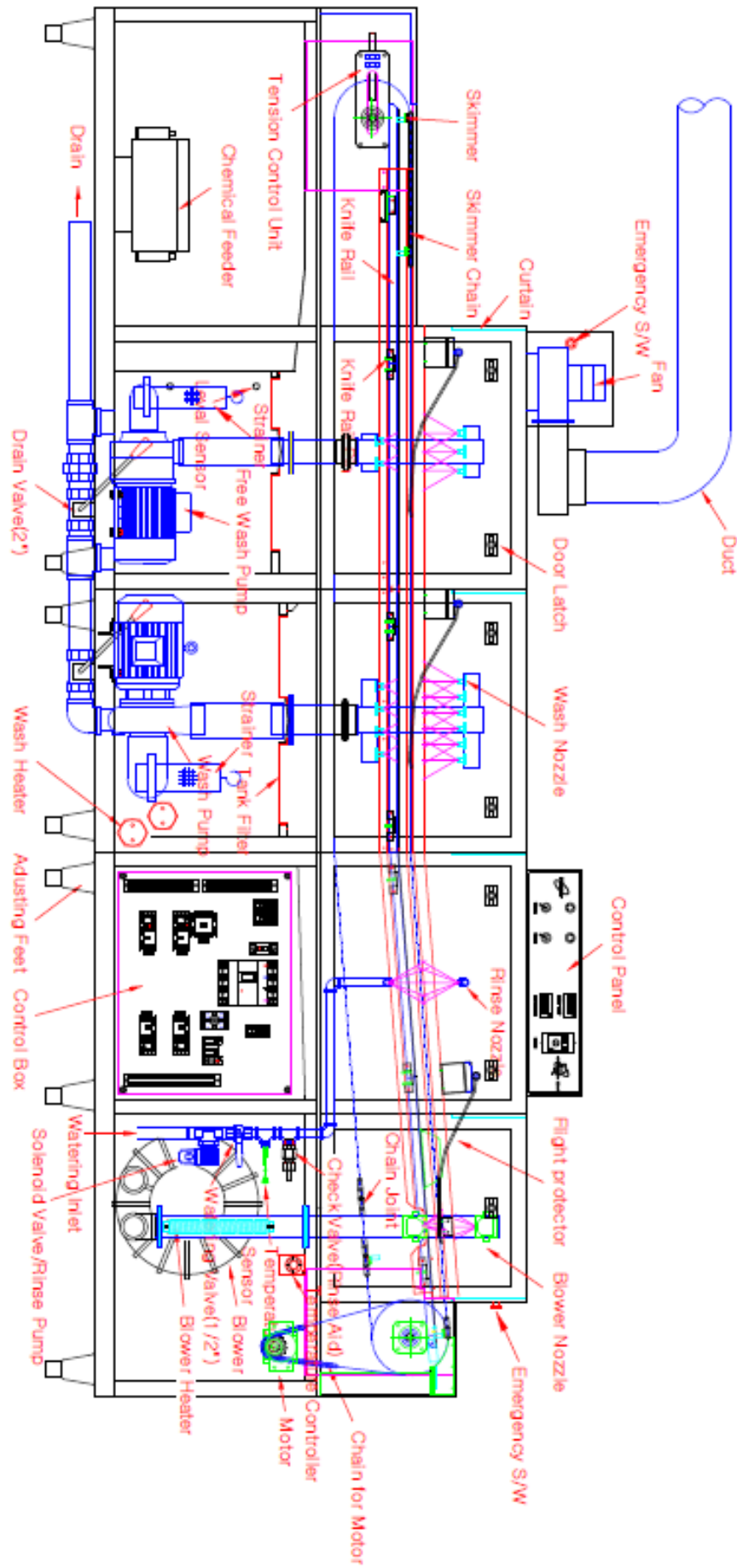
4) Wash

- ⌚ Don't operate till wash temperature, 60°C
- ⌚ Turn on start switch
- ⌚ Check pump working and its noise
- ⌚ Check conveyor and emergency switch
- ⌚ Check Rinse and Detergent
- ⌚ Don't stack the dishes for free access to all sides of each dish
- ⌚ Without stack and sort system, a user should receive the dishes in hand
- ⌚ Turn start switch off while not operation, temporarily

5) Check after operation

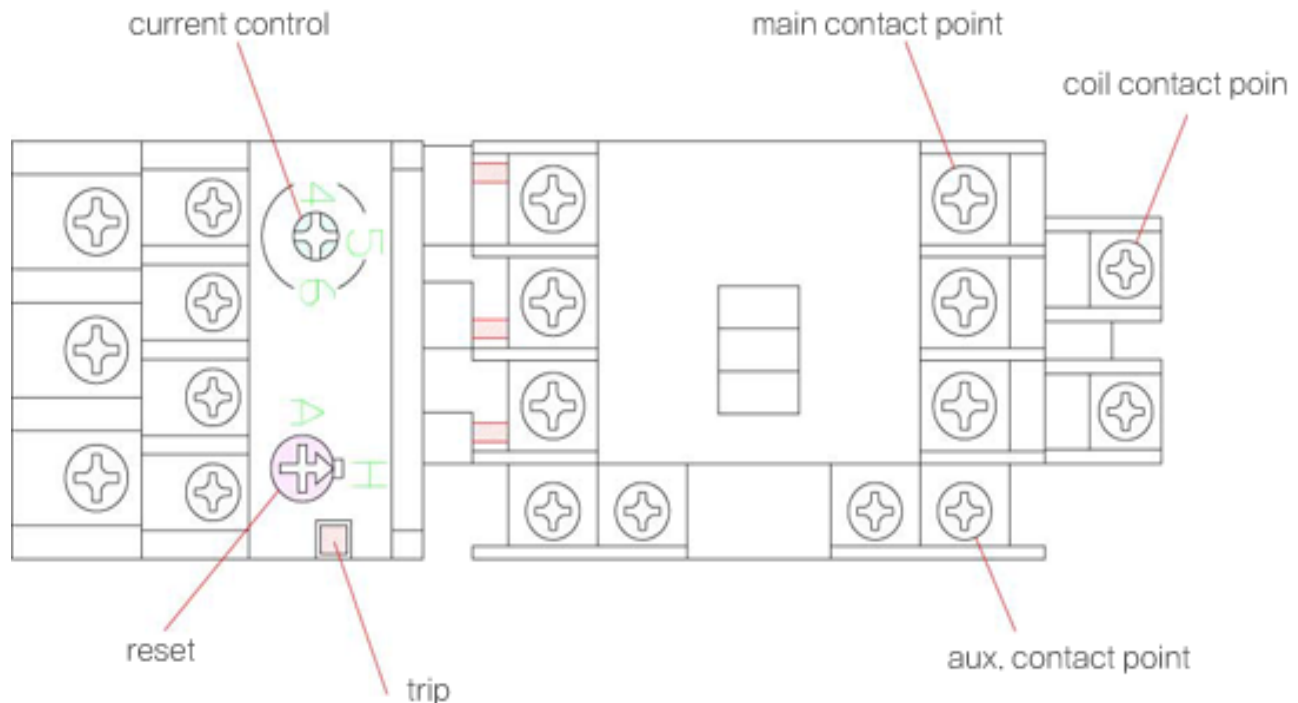
- ⌚ Check no dishes inside of dishwasher
- ⌚ Turn off the power switch if finished up the work
- ⌚ Unfasten drain valve for draining
- ⌚ Take food stuffs off out of strainer
- ⌚ Clean the inside of dishwasher
- ⌚ Close all valves

3. PARTS NAME



4. Electrical parts

1) Contactor



Tripper: Automatically power-off device to protect the motor from over load current

© Trip up by 2-3mm during overcurrent

© Push the trip button but for a damage after check the motor

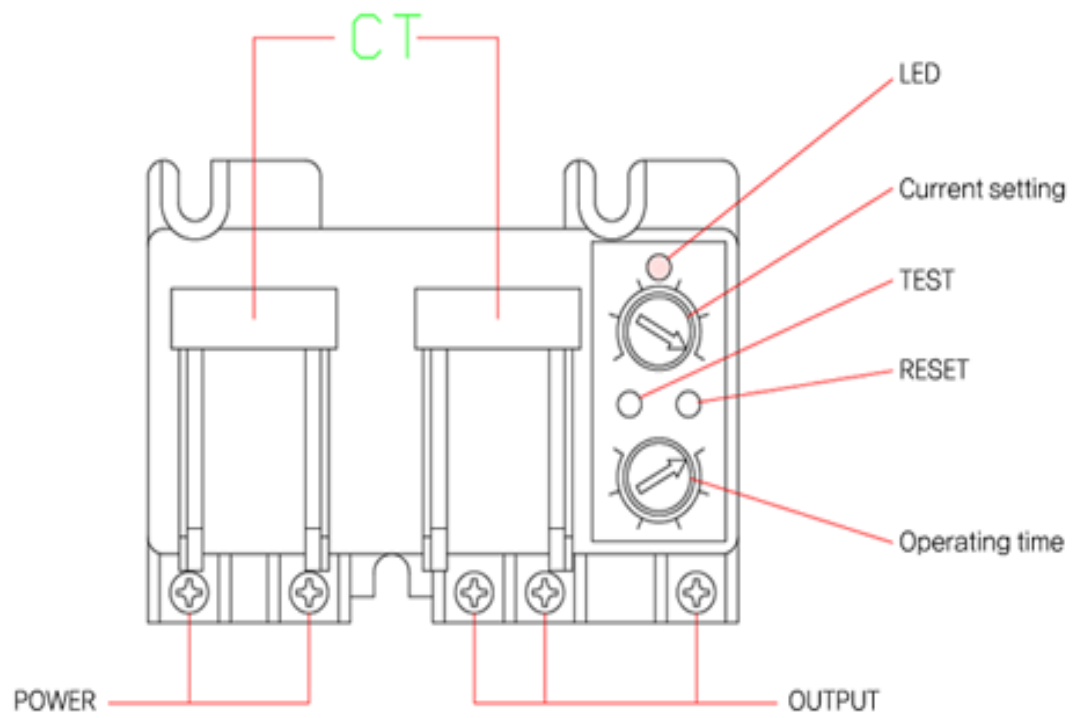
Current control Device: Current control device suitable for the current value

Reset button Setting trip mode in automatic or manual

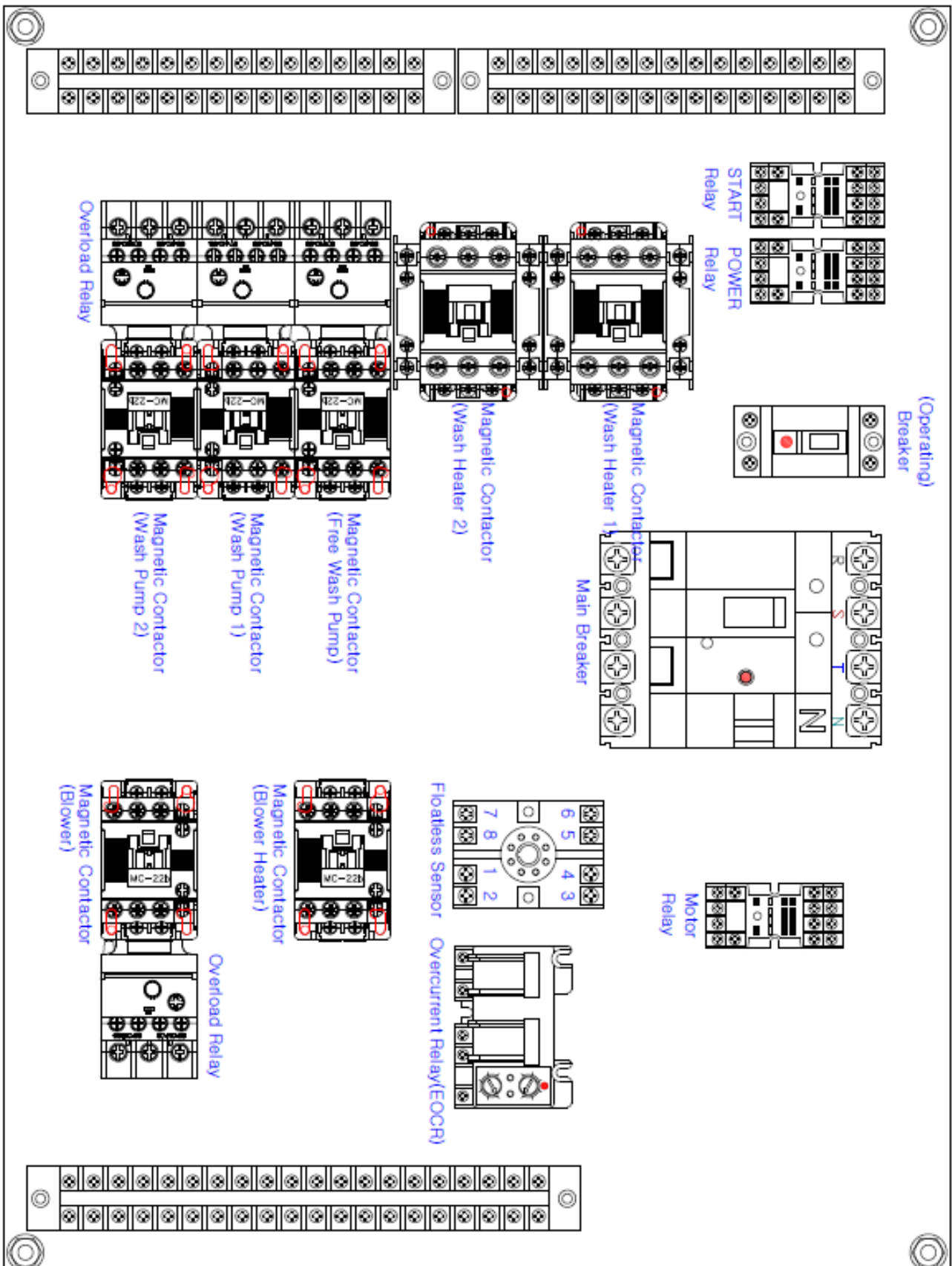
© Manual reset: H position [button up-basic mode]

© Automatic reset: A position

2) Earth Leakage Circuit Breaker



5. Trouble Shooting



1) If the system does not work?

- ⊙ Check the main breaker-ON in the control box.
- ⊙ Check the ELB ON in the operation breaker.
- ⊙ Check the power lamp-ON at Power s/w ON.
- ⊙ Check the Ready lamp ON.
- ⊙ Check the Main Electric power 380V (in case of 3 Phase 4 wired)
- ⊙ Check the operating power 220V.

2) If not watering

- ⊙ Check the power s/w lamp
- ⊙ Check the watering valve open
- ⊙ Check the 220V ? on No. 44 & 45 of terminal bloc
- ⊙ Check the watering (solenoid) valve
- ⊙ Check power on No. 5 & 6 of floatless sensor
- ⊙ Check the lamp off after clean the sensor if floatless lamp on.

3) if not quit watering

- ⊙ Clean the floatless sensor (Refer to page 5)
- ⊙ Clean the solenoid valve
- ⊙ Check the floatless lamp on

4) If prewash not good

- ⊙ Clean the dregs off on the prewash nozzle
- ⊙ Check the tripper up on the prewash contactor
- ⊙ Clean the dregs off in the prewash pump
- ⊙ Check the leakage and coil short of prewash pump
- ⊙ Push the tripper of wash pump
- ⊙ Check 220V on the prewash contactor by voltage tester

5) If dish is not clean after wash

- ⊙ Remove dregs at the wash nozzle (Refer to page 22)
- ⊙ Check the tripper up on wash contactor (Refer to page 14)
- ⊙ Remove the dregs in wash pump
- ⊙ Check the leakage and short of wash pump
- ⊙ Push the tripper after check wash pump
- ⊙ Check 380V on wash pump contactor by voltage tester
- ⊙ Check the water is full in wash tank, otherwise fill up the water into the wash tank after its leakage.
- ⊙ Check the wash temperature, 55°C ~ 65°C
- ⊙ Check the chemical agent feeding, automatically
- ⊙ If lower temperature, check the temperature controller and contactor

6) If rinse is not good

- ⊙ Check if the water pressure, 1.2Kg/cm² over
- ⊙ Clean dregs on the rinse nozzle
- ⊙ Check rinse temperature, 82℃

7) If dry is not good

- ⊙ Check the tripper up on the blower contactor (Refer to page 14)
- ⊙ Check the blower motor
- ⊙ Check 380V at blower contactor by voltage tester
- ⊙ Check the circuit breaker on of blower heater
- ⊙ Check the tripper up on the blower heater contactor (Refer to page 14)
- ⊙ Push the tripper down after checking blower heater.
- ⊙ Check 220V in blower heater contactor
- ⊙ Check the hot wind out of blower heater nozzle

8) If conveyor chain does not work

- ⊙ Check emergency s/w on
- ⊙ Check the display of chain speed
- ⊙ Check the chain speed control on
- ⊙ Check the current control overload relay (Refer to page 15)
- ⊙ Check relay lamp of motor
- ⊙ Check the chain (Refer to page 5)
- ⊙ Check the sprocket and its key of motor

9) If emergency does not work

- ⊙ Check emergency s/w
- ⊙ Check the current control overload relay
- ⊙ Check the lamp of motor relay

10) When the conveyor chain deorbit

- ⊙ Disjoint the chain after power off Immediately
- ⊙ If deorbit by loosen chain fasten it with tension control nut (Refer to page 23)

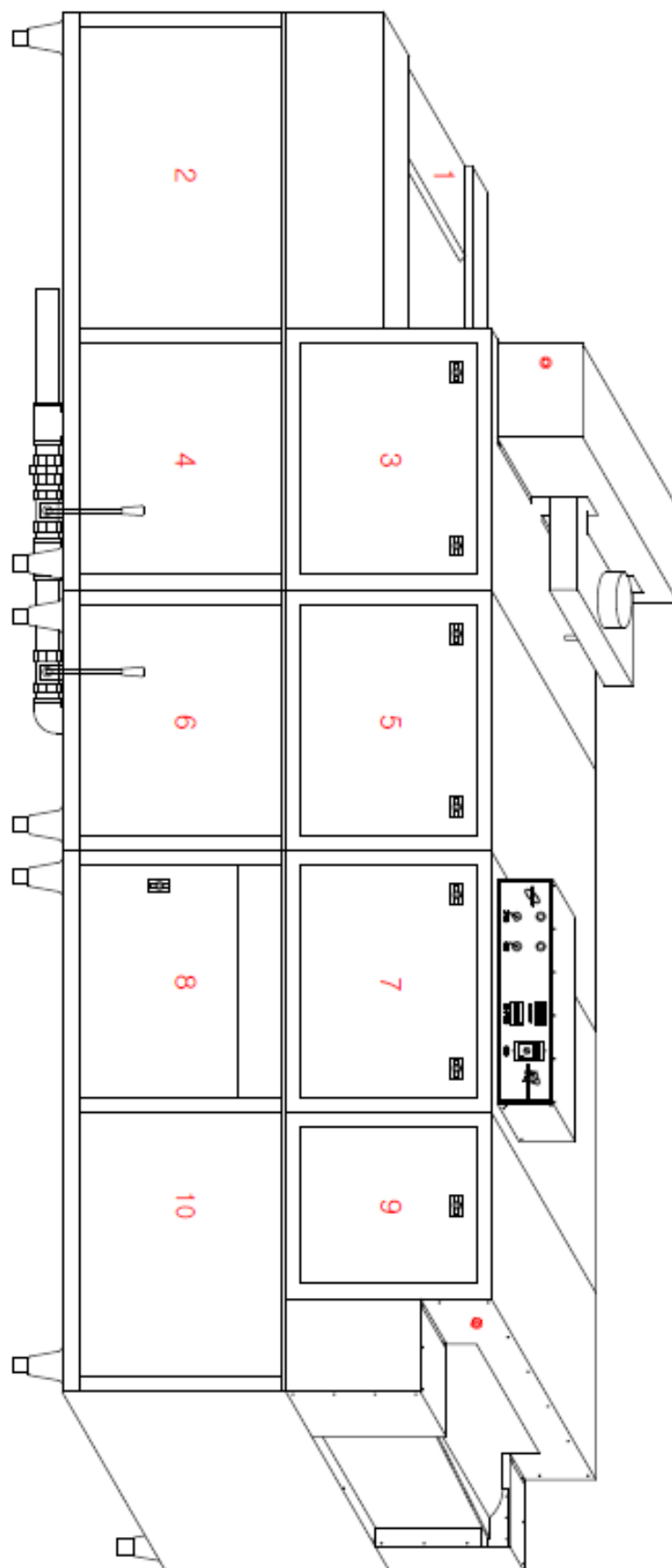
11) If out of order at steam booster

- ⊙ Check the pressure guage for the proper pressure
- ⊙ Clean the solenoid valve after disassemble it
- ⊙ Check solenoid valve operation

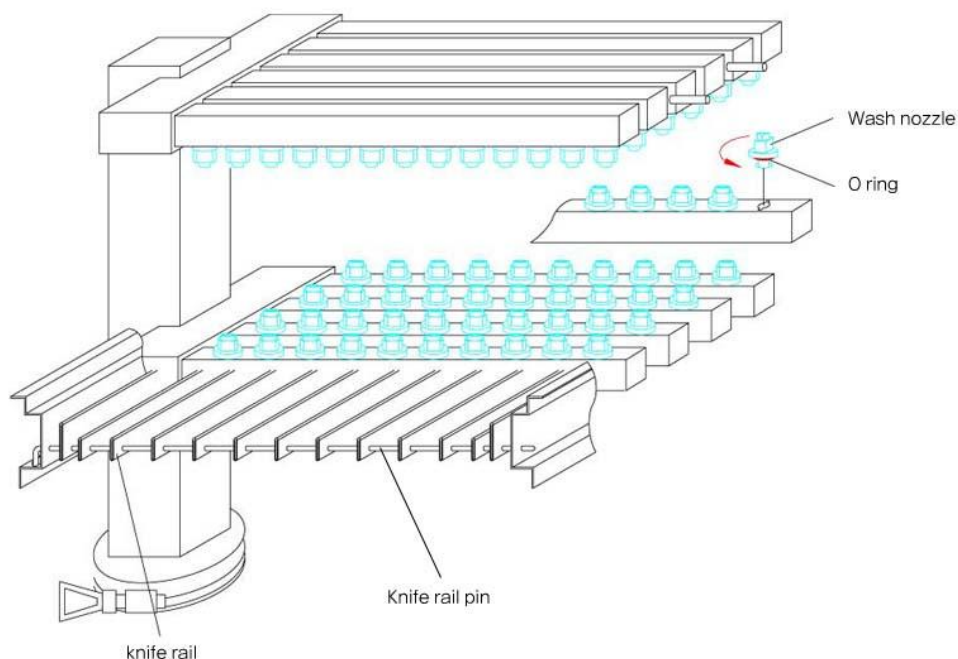
12) If out of order at gas booster

- ⊙ Check gas supply
- ⊙ Check the gas, high or low pressure? (Preferred low pressure in case of LPG)
- ⊙ Check the inlet & outlet valve of gas booster

6. Maintenance

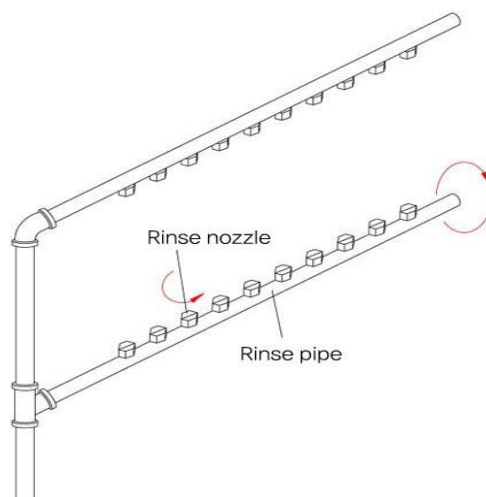


1) Removal of the dregs on wash nozzle



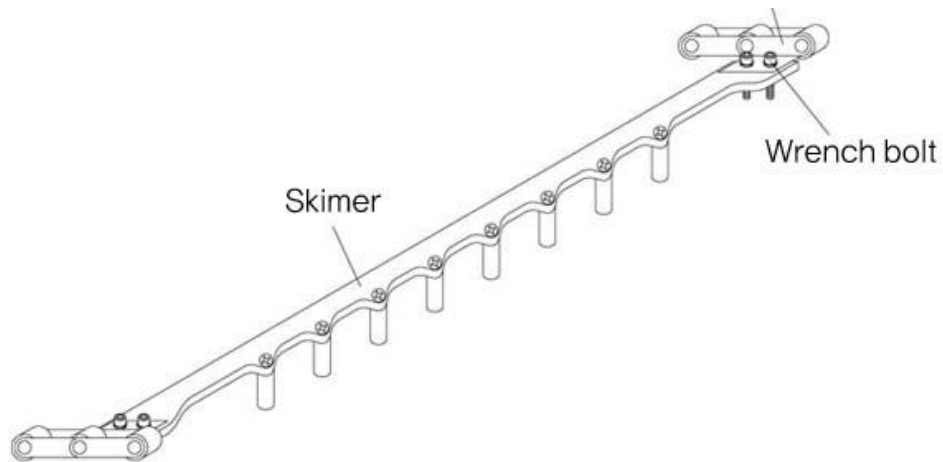
- ① open the door No.5 [Refer to page 11]»
 - ② Pull the pin out of the knife rail
 - ③ Take up the knife rail
 - ④ Loosen the nozzle and remove the dregs
- ※ Be sure to watch O ring in the wash nozzles

2) Dregs removal of rinse nozzle



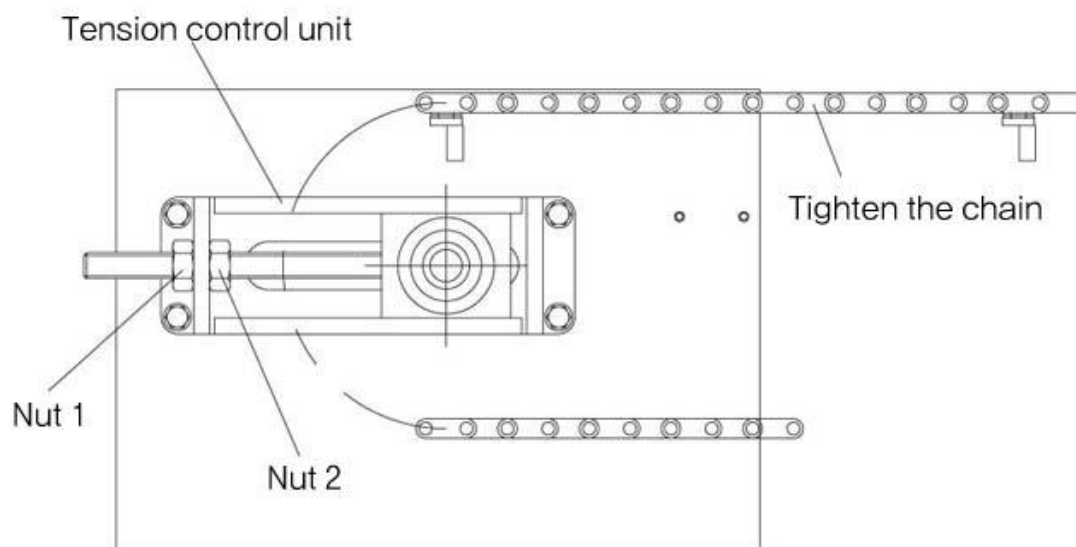
- ① Open the door No.7 [Refer to page 11] »
- ② Loosen the rinse pipes at both sides as shown on the above
- ③ Remove the dregs after loosening the above nozzles
- ④ Assemble the rinse nozzle in reverse order

3) How to exchange skimmers



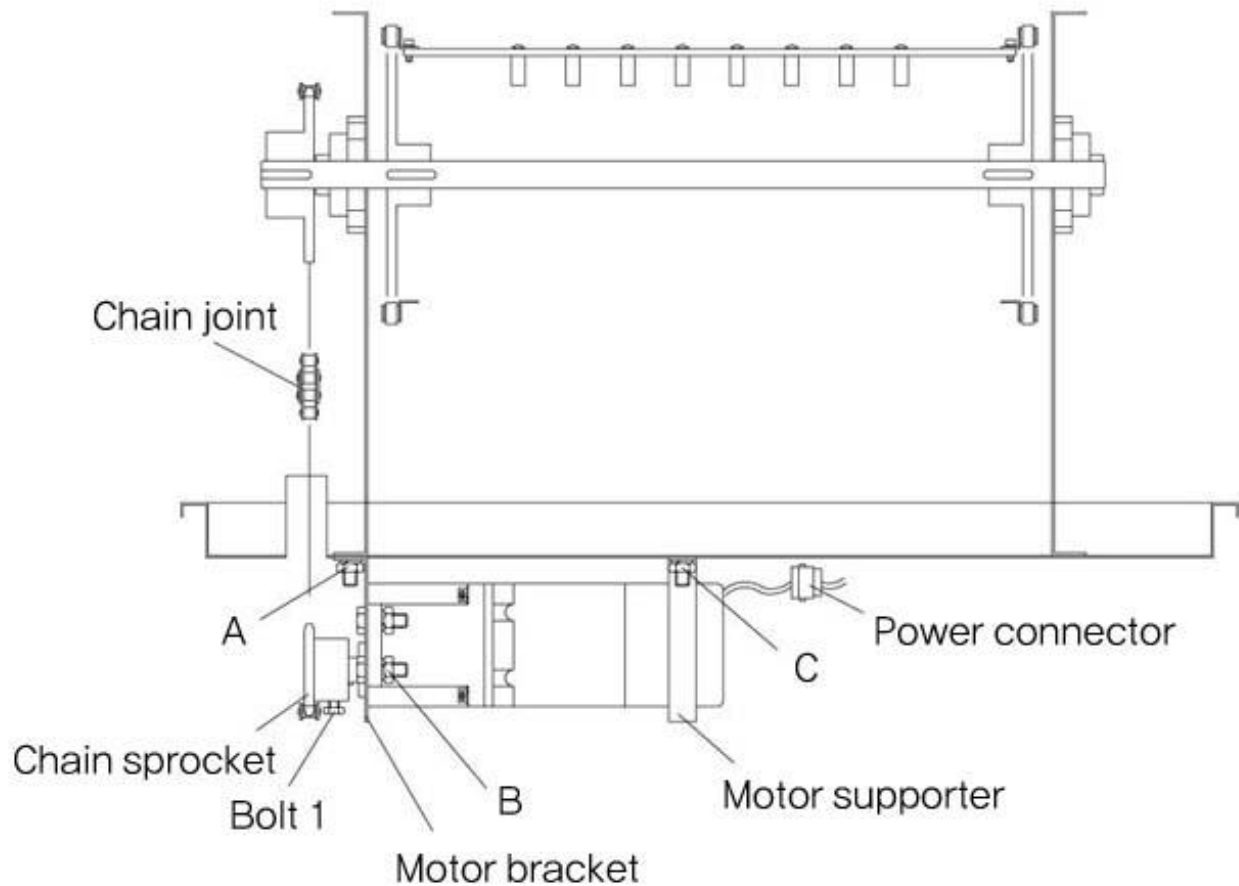
- ① Disassemble the entrance cover No.1 [Refer to Page 11]»
- ② Pull the skimmer to be replaced toward the entrance
- ③ Loosen the wrench bolt and spring washer on chain attachment
- ④ Assemble new skimmer after replacement
Tighten the chain, loosed fastening Nut 1

4) How to control the tension of chain



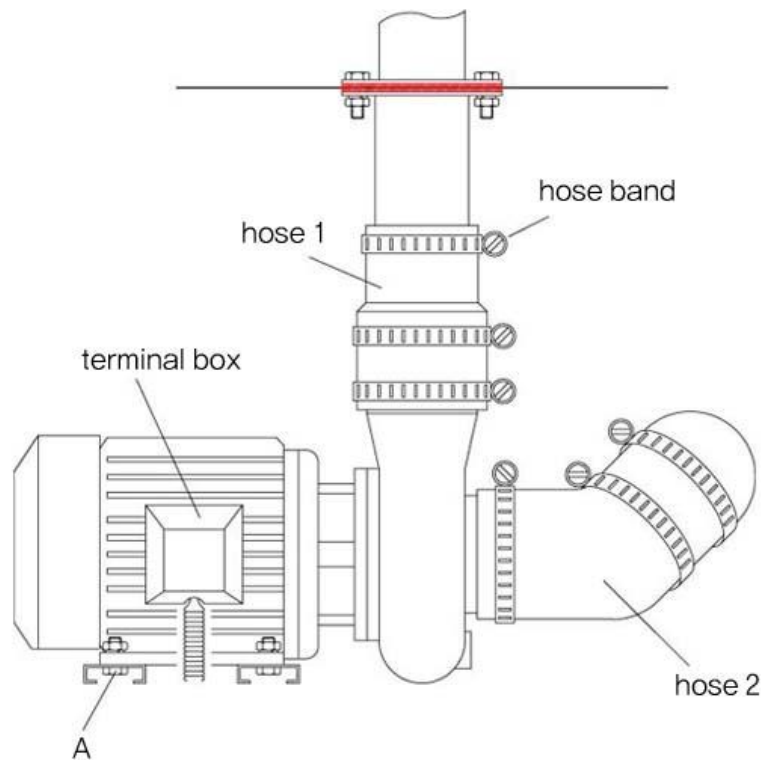
- ① Disassemble the entrance cover No.1 [Refer to Page 11]
- ② Pull the skimmer toward the entrance
- ③ Tighten the chain, fastening Nut 1
- ④ Fasten Nut 2
- ⑤ Fasten the bolt after covering it

5) How to replace the motors



- ① Open No. 8(control box) [Refer to page 11] and power off [Refer to page 5]
- ② Open No. 10(cover) [Refer to page 11]
- ③ Disconnect the motor
- ④ Loosen A, nut by 5mm and take off motor bracket and then disassemble the chain joint
- ⑤ Take off the motor after loosening B (8mm bolt & nut) and C (8mm nut)
- ⑥ Loosen bolt 1 and take off the chain bracket and then assemble new motor on motor bracket
- ⑦ Assemble the chain joint
- ⑧ After tightening the chain, fasten A, nut
- ⑨ Cover No.10(cover) [Refer to page 11]

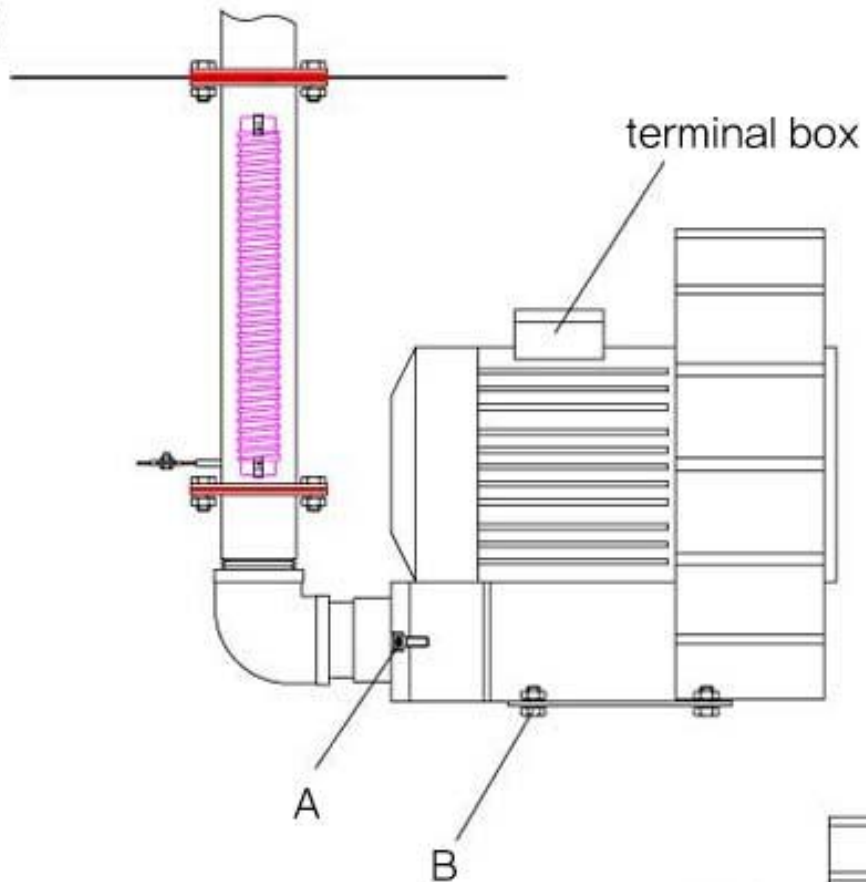
6) How to replace wash pumps



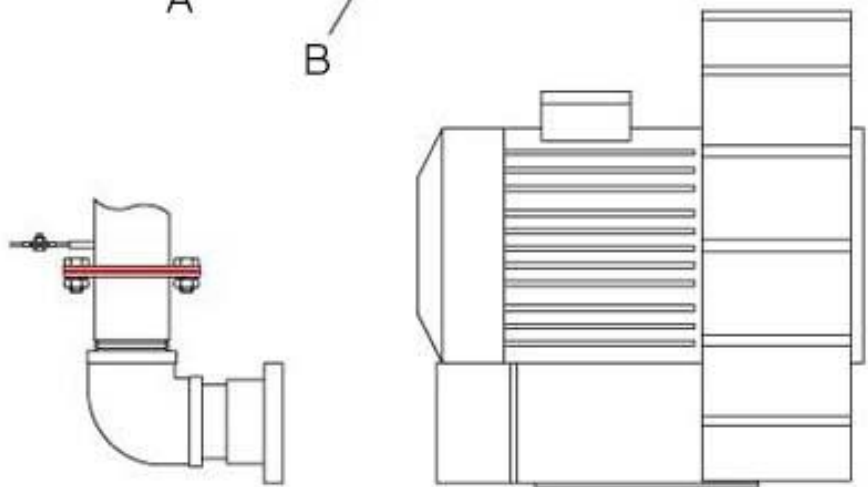
- ① Open No. 8(control box) [Refer to page 11] and power off [Refer to page 5]»
- ② Open No. 6(cover) [Refer page 11]»
- ③ Disconnect the cable after opening terminal box [Be sure to confirm the cable colors]
- ④ Loosen the hose band
- ⑤ Loosen A, bolt and nut (8mm 2pcs)
- ⑥ Put hose 1 upward
- ⑦ Disassemble wash pump and hose 2, pulling them toward
- ⑧ Install new wash pump in reverse order

7) How to replace ring blower

【 picture 1 】

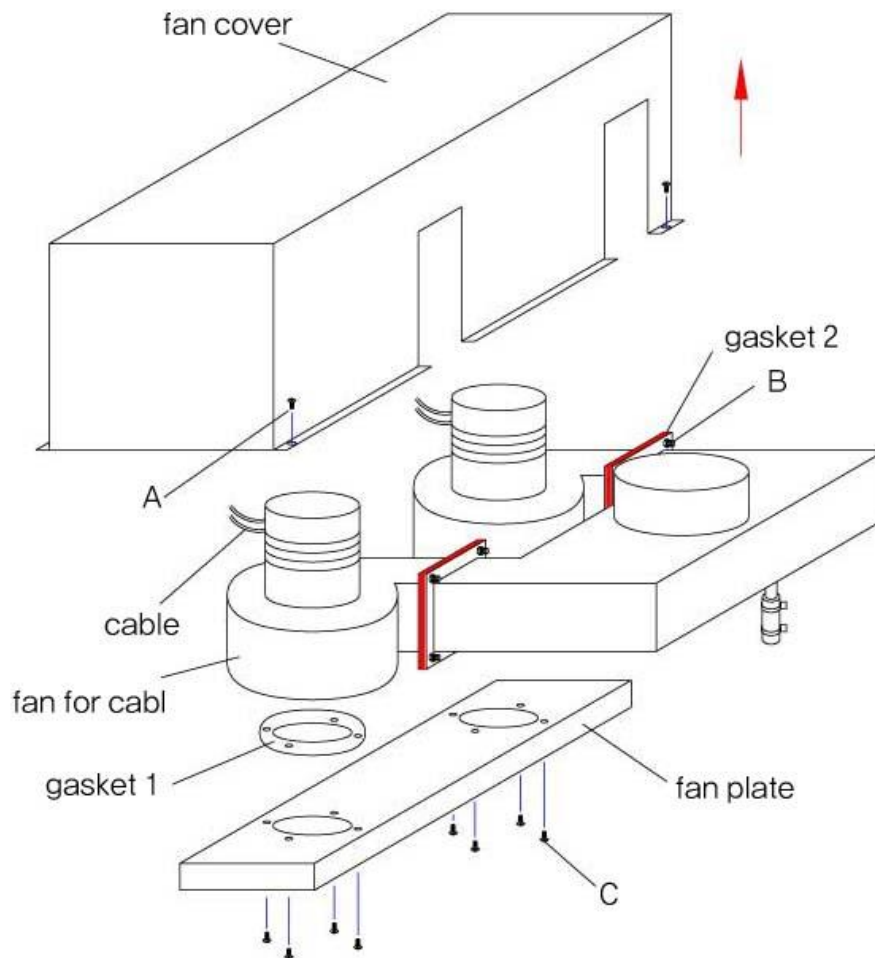


【 picture 2 】



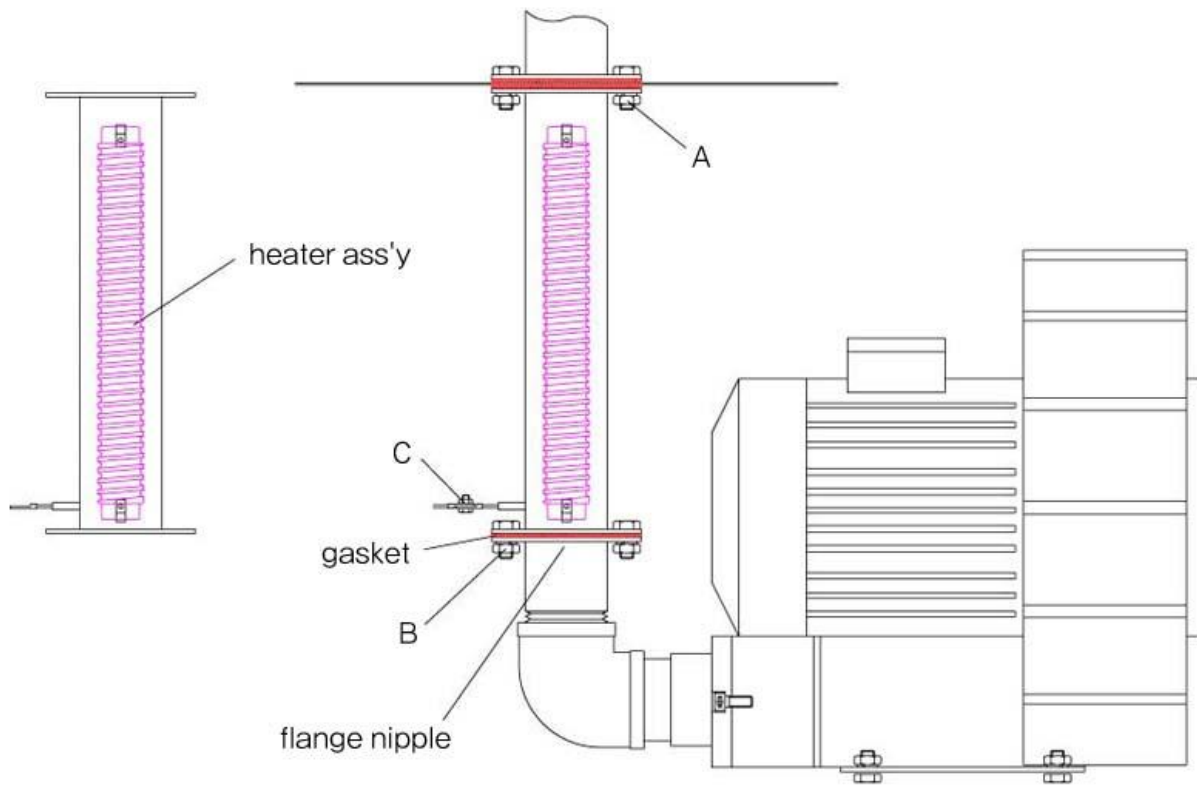
- ① Open No. 8(control box) [Refer to page 11] and power off [Refer to page 5]
- ② Open No. 10(cover) [Refer to page 11]
- ③ Open terminal box and disconnect the cable [Be sure to confirm the cable colors]
- ④ Loosen A, wrench bolt (8mm 2pcs)
- ⑤ Disassemble B, bolt and nuts (8mm, 4pcs)
- ⑥ Refer to the picture 2
- ⑦ Assemble the new blower like picture 1

8) How to replace fans



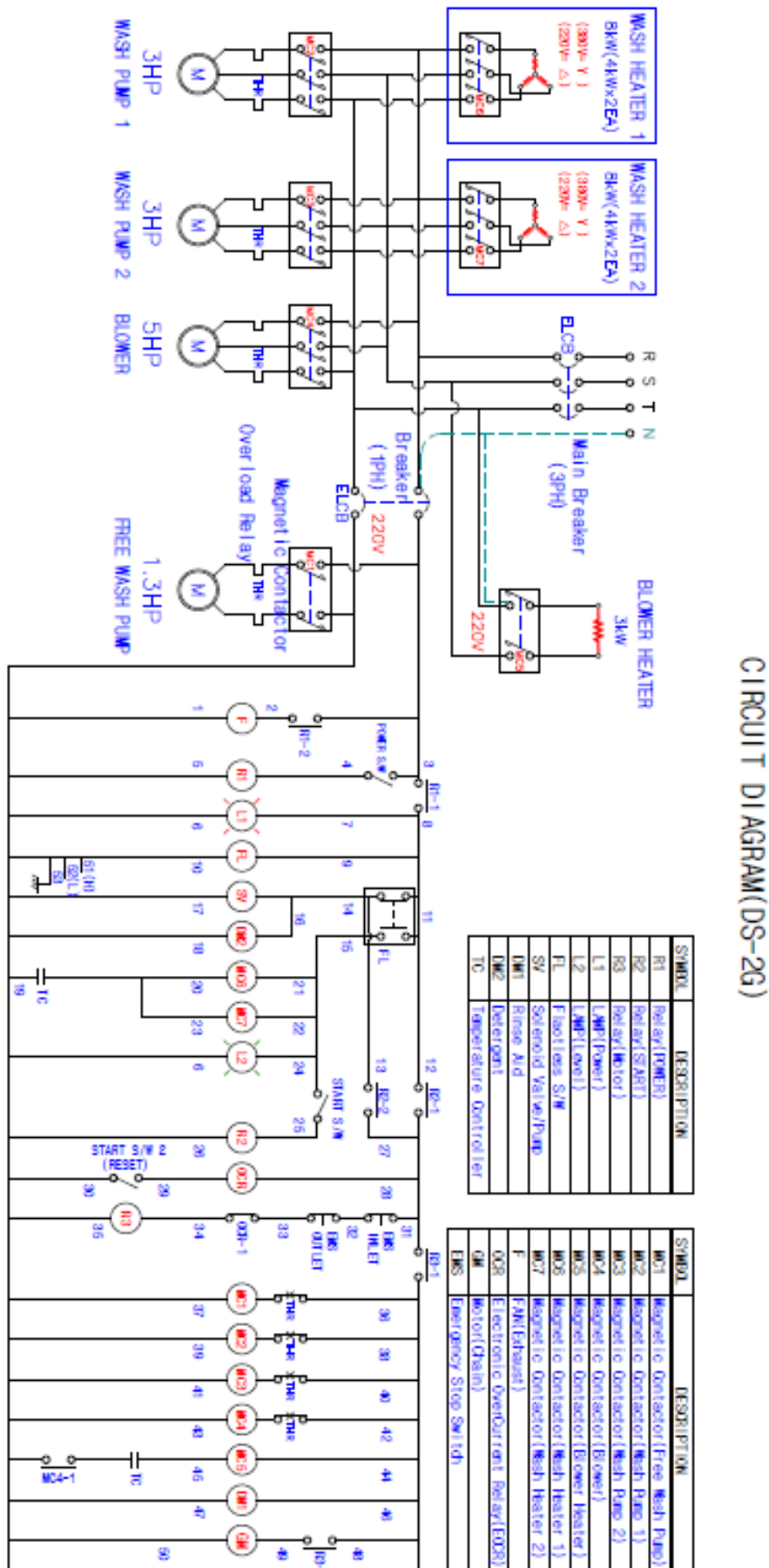
- ① Open No. 8(control box) [Refer to page 11] and power off [Refer to page 5]»
- ② Loosen A, bolt take off the fan cover
- ③ Loosen fan B, bolt and nut (4mm, 4pcs)
- ④ Loosen C, tapping screw
- ⑤ Disconnect the cable out of fan
- ⑥ Remove the fan
- ⑦ Equip new fan
- ※ After plating silicon on both gasket 1 & 2, assemble it.

9) How to blower heater ass'y

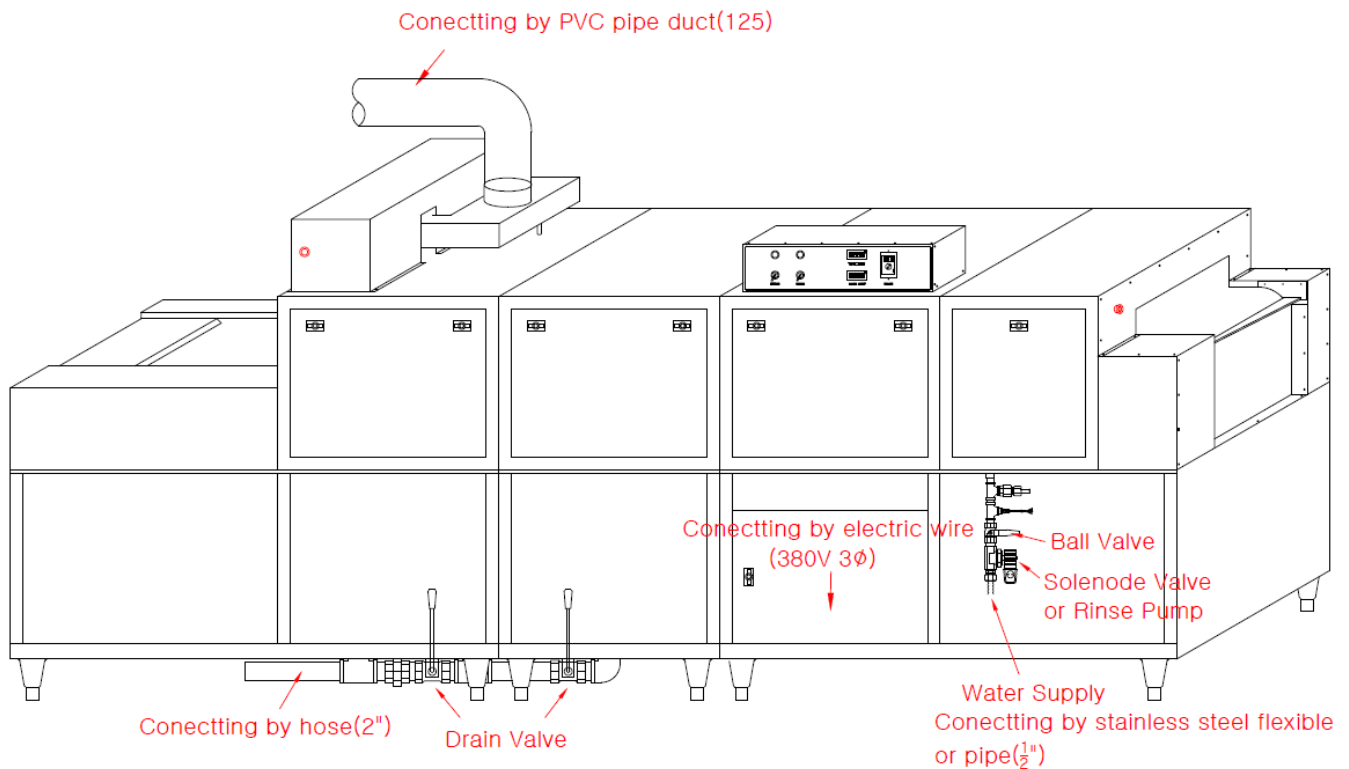


- ① Open No. 8(control box) [Refer to page 11] and power off [Refer to page 5]
- ② Open No. 10(cover) [Refer to page 11]
- ③ Loosen A, bolt and nut (8mm, 4pcs)
- ④ Loosen B, blot and nut (8mm, 4pcs)
- ⑤ Disconnect C, heater terminal
- ⑥ Disassemble heater ass'y like the left

7. Electric wiring diagram



8. Dishwasher Installation



1) Instruction before installation

- ◎ Confirm the place to be installed
- ◎ Confirm the electric specifications [380V, 3ph, 4wired]
- ◎ Confirm watering pressure, over 1.2kg/cm²
- ◎ Confirm the ventilation
- ◎ Position the drainage

2) How to install the dishwasher

- ◎ Level the dishwasher in using, adjusting feet
- ◎ Connect the cable to terminal bloc in order
- ◎ Be sure to confirm the elec. spec's, 380V, 3Ph, 4wired
- ◎ Connect the hose for rinse to check valve [Refer to page 5]